

## Software Installation Notes

The Drivers and Utilities Disk includes the latest USB device drivers and interface library needed to operate your ScanX Digital Imaging System with In-Line Erase. It also includes diagnostic utilities and a demonstration program to help troubleshoot any problems you may encounter.

### System Requirements

---

The minimum computer system requirements necessary to operate the ScanX are listed below:

- Operating System: Windows XP Professional with Service Pack 3 or later for an Intel 32-bit processor;  
Microsoft Windows XP Professional 64-bit Edition with Service Pack 2 or later for an Intel 64-bit extended (x64) processor;  
Microsoft Windows Vista Business, Enterprise, or Ultimate with Service Pack 2 or later for an Intel 32-bit or an Intel 64-bit extended (x64) processor;  
Microsoft Windows 7 Professional, Enterprise, or Ultimate with Service Pack 1 or later for an Intel 32-bit or an Intel 64-bit extended (x64) processor; or  
Microsoft Windows 8.1 Professional or Enterprise for an Intel 32-bit or an Intel 64-bit extended (x64) processor.

USB Port: Must be USB 1.1 or later

Hard Drive: At least 1 GB of free disk space required to activate the scanner.

Image Management Software: Authorized third-party Digital Imaging Software is required.

### Installing the Software

---

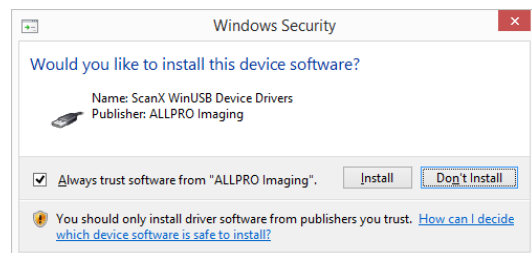
**NOTE:** You must have Administrative privileges in order to install the device drivers, libraries, and other software.

Use the installation program to install or update the device drivers, the library files, and the ScanX utilities.

The software installation program can be started from the menu that automatically starts when the Drivers and Utilities disk is inserted into your computer. You can start the menu manually by double-clicking on the AutoRun program in the root directory of the disk, typically "D:\AutoRun.exe". From the menu, click "Install the Drivers and Utilities" to start the software installation program.

Windows may ask you to confirm that you would like to install the device software. Press the 'Yes' or 'Install' button to complete the installation.

When upgrading from an earlier version, please disconnect or turn-off the ScanX before starting the installation program to ensure that the drivers are updated properly.



## **Windows Vista Operating Systems**

The ScanX uses version 1.09 of the Microsoft device driver framework which is later than the version provided as part of Windows Vista. When you first connect a ScanX, Windows will upgrade to this newer version, typically requiring the operating system to restart. The ScanX may not function properly until Windows has restarted.

Restarting is not typically required with Windows XP, Windows 7, or Windows 8.1.

## **Updating the Library Files**

If you install Authorized third-party Digital Imaging Software after installing the drivers and utilities, that software may replace the library files with older ones that are not fully compatible with your scanner. To restore the library files to the latest version, run the Library Update program.

The Library Update program is installed as part of the ScanX utilities and can be run by pressing the 'Start' button and looking for 'ScanX Utilities' under 'Programs', and then selecting 'Update Library'.

The Library Update program can also be run from the menu that starts automatically when the Drivers and Utilities disk is inserted into your computer by selecting "Just update the library files".